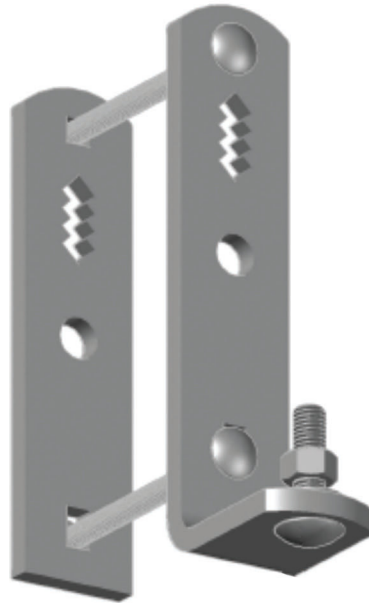


CB-101F - CUT-OUT BRACKET



Features:

- ✓ 2" Wide brackets for added strength
- ✓ Bottom adjustment slot for easy installation
- ✓ Replaces NEMA B brackets
- ✓ Fiberglass coated to mitigate touch potential from wildlife

Product Specifications:

- ✓ Fits Crossarm Heights between 4-1/8" to 6-3/8"
- ✓ Fits Crossarm Widths between 2-1/2" to 4-1/2"
- ✓ 2" wide x 3/8" Brackets

PART NUMBERS:

CB-101f

CARTON QUANTITY:

12

CARTON WEIGHT:

56 lbs

MATERIALS:

**A-36 Low Carbon Steel
Fiberglass Coated**