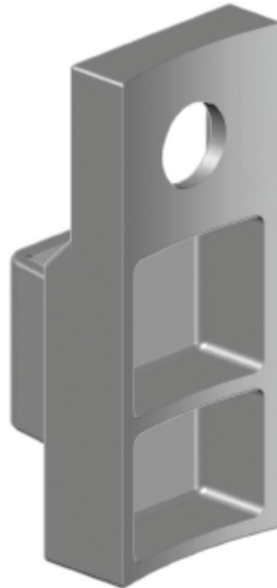
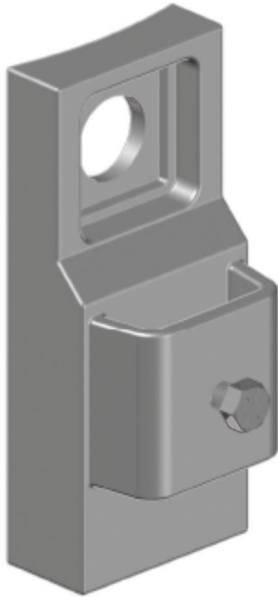


LC-1011XB - LADDER CLIP



Easy installation on all your utility poles including steel, composite, or fiberglass

Features:

- ✓ Climbing Ladders can now be used on Steel and Composite poles
- ✓ Durable Stainless Steel Construction
- ✓ One Bolt Easy Installation (not included)
- ✓ Easy to Install
- ✓ Tested and Certified to 10,000 lbs

PART NUMBERS:

LC-1011XB

CARTON QUANTITY:

20

CARTON WEIGHT:

40 lbs