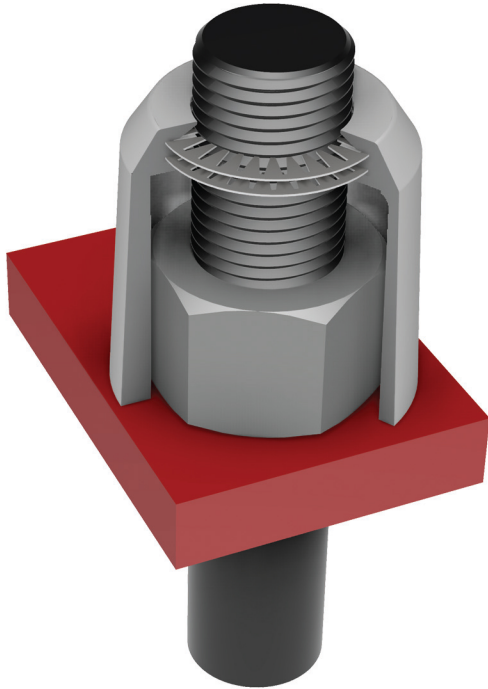


POLE BASE SAFETY CAP



FEATURES:

- ✓ Easy tap down installation
- ✓ No welding needed, no fire watch crew
- ✓ Powder coated cast aluminum shell with stainless steel teeth

PART NUMBERS:

- Part Number: 2.5"
Standard Pole base
safety cap #SC205
- 2.5" Medium MicroPile
pole base safety cap
with washer #SC207W
- 2.75" Large MicroPile
pole base safety cap
#SC275