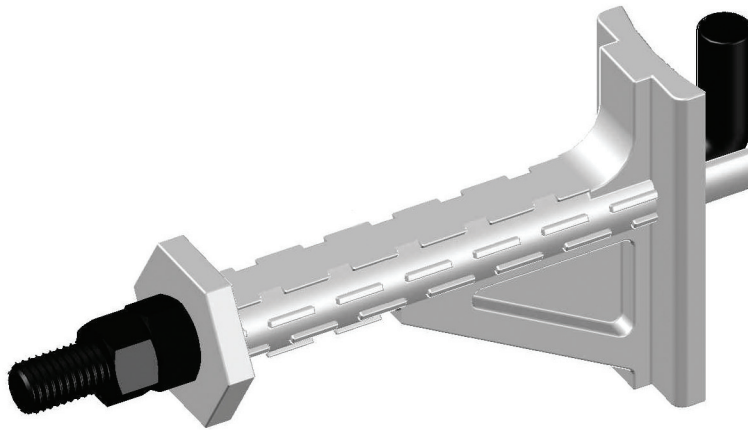


## POLE STEP - PART #1001 STAINLESS STEEL AND #1001A ALUMINUM



**\* Steps not to be used as a hoisting device**

### FEATURES:

- ✓ One piece step construction
- ✓ Easy "J" Bolt blind installation
- ✓ Mounts into a 1" or 1-1/8" diameter opening
- ✓ Designed to mount on round or flat surface
- ✓ Designed for use on Steel or Composite poles
- ✓ Oversized Hexagon "boot stop"
- ✓ Patented

### PART NUMBERS:

**1001**  
**1001A**

### CARTON QUANTITY:

**1001 – 15 steps**  
**1001A – 15 steps**

### CARTON WEIGHT:

**1001 – 51 lbs**  
**1001A – 45 lbs**